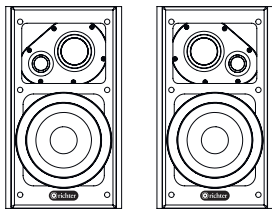


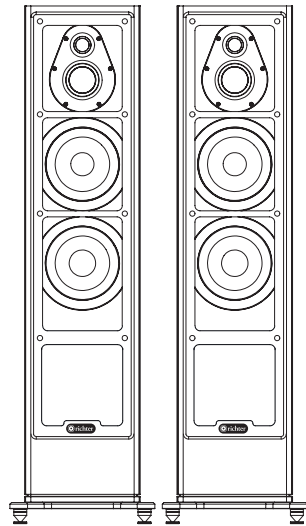


S7 SPECIAL EDITION

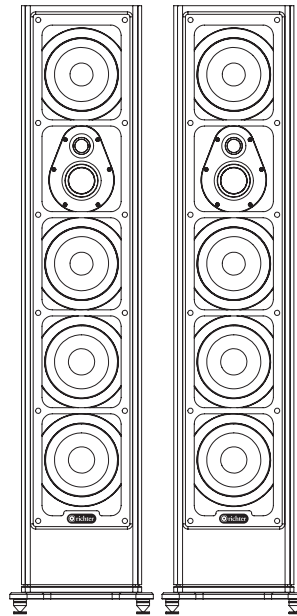
LOUDSPEAKERS



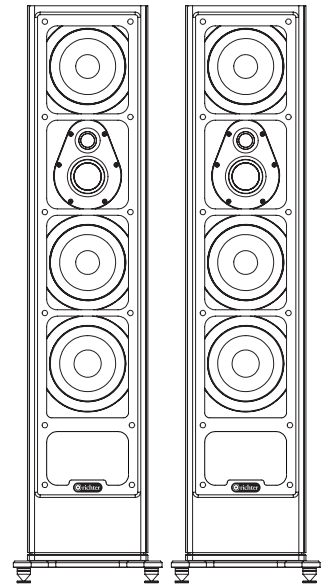
AURORA S7SE



WIZARD S7SE



EXCALIBUR S7SE



DRAGON S7SE

User Manual

Contents

Veneer Care Guide.....	3
Important Safety Instructions	4
A word from our Design Team.....	5
What's in the box & Before you begin	6
Fitting Stabilisers.....	7
Installation and Connection options	8
Bi-Wiring.....	9
Placement.....	10
Room Tuning & Care of your speaker	11
Troubleshooting and Service	12
Specifications	13-14
Warranty	15

Thank you for choosing this Richter Series 7 Special Edition Speaker. Please read the instructions and warnings carefully before use to ensure safe and satisfactory operation of this product.

Richter Audio - Natural Walnut Veneer Care Guide

Crafted for the love of music, and built to last.

Your Richter loudspeakers feature a genuine Natural Walnut real-wood veneer, finished to highlight the rich grain and warmth of the timber. Each veneer is unique – subtle variations in colour and pattern are a hallmark of real wood and part of its natural beauty. With simple care, your speakers will maintain their elegance, age gracefully, and continue to sound every bit as good as they look for many years to come.

Caring For Your Walnut Finish

1. Regular Cleaning

Gently dust with a soft, dry microfiber cloth in the direction of the grain to keep the surface clean. For light marks, use a slightly damp cloth, then immediately dry with a clean, soft cloth. Avoid abrasive pads or harsh cleaners.

2. Protect From Sun & Heat

Keep speakers out of direct sunlight to prevent fading or colour change. Avoid placing them near heaters, fireplaces, or air-conditioning vents where temperature and humidity fluctuate.

3. Maintain Ideal Conditions

Natural wood performs best in stable humidity (around 40-60%). Avoid very dry or damp environments, which can cause warping or surface cracking.

4. Preserving the Finish

If the veneer appears dry over time, apply a light natural beeswax or quality wood furniture oil once every year or two.

Always test any product on a small, hidden area first.

Do not use silicone-based or solvent cleaners.

5. Handle With Care

Use clean hands when positioning or moving your speakers.

Avoid placing objects directly on top that could scratch or mark the veneer.

Use original packaging when moving or storing, or if original packaging is no longer available, wrap in a soft cloth or bubble wrap for protection.

A Natural Material, a Living Finish

Important Safety Instructions

- 1. READ INSTRUCTIONS** - All safety and operating instructions should be read before this product is operated.
- 2. RETAIN INSTRUCTIONS** - The safety and operating instructions should be retained for future reference.
- 3. HEED WARNINGS** - All warnings on this product and in the operating instructions should be adhered to.
- 4. FOLLOW INSTRUCTIONS** - All operating and use instructions should be followed.
- 5. WATER & MOISTURE** - Do not use this product near water - for example, near a bathtub, washbowl, kitchen sink, laundry, tub, in a wet basement, near a swimming pool, or the like
- 6. ATTACHMENTS** - Do not use any attachments not recommended by the product manufacturer as they may cause hazards.
- 7. ACCESSORIES** - Do not place this product on an unstable cart, stand, tripod, bracket, or table. The product may fall, causing serious injury to a child or adult, and serious damage to the product. Use only with accessories recommended by the manufacturer.
- 8. WALL or CEILING MOUNTING** - This product should be mounted to a wall or ceiling only as recommended by the manufacturer.
- 9. HEAT** - This product should be situated away from direct sunlight and heat sources such as radiators, heat registers, stoves, or other equipment that produce heat.
- 10. CLEANING** - This product should be cleaned only as recommended by the manufacturer.
- 11. OBJECT & LIQUID ENTRY** - Care should be taken so that objects do not fall and liquids are not spilled onto the enclosure.
- 12. SERVICING** - Do not attempt to service the product yourself, beyond what is described in these operating instructions.
- 13. REPLACEMENT PARTS** - When replacement parts are required, be sure the service technician has used replacement parts specified by the manufacturer or have the same characteristics as the original part.
- 14. SAFETY CHECK** - Upon completion of any service or service of repairs to this product, ask the service technician to perform safety checks to determine that the product is in proper operating condition. All other servicing should be referred to qualified service personnel.

A word from the Richter Design Team

As Richter marks its 40th anniversary, we're proud to present the Series 7 Special Edition (S7SE) range – the culmination of decades of design evolution and collaboration. Together, our engineering and design teams have drawn on more than 35 years of loudspeaker innovation to create a range that truly embodies our founder's belief:

“We're not in the audiophile industry – we're in the entertainment industry.”

The Series 7 Special Edition range is built to connect you emotionally to the music – delivering power, precision, and pure enjoyment. Crafted to move you.

The Design Brief

Our vision was to design a loudspeaker that looks as comfortable in a lounge room as it sounds within it. The aim was to minimise the use of black, introduce warmer, natural finishes, and add just enough refined detail to say “look at me” without shouting for attention. We wanted to create a speaker that you are as happy to look at as to listen to – a timeless blend of performance and presence that complements modern living spaces.

Special Edition Engineering

Each model features newly developed drivers using lightweight yet rigid paper-pulp cones, cast-alloy baskets, and larger voice coils for faster, tighter, more controlled bass.

For the first time, we've introduced a dedicated 70 mm mid-dome driver, engineered to reproduce the critical midrange with greater detail, presence, and realism. Blended seamlessly with our Special Edition tweeter, it creates a smoother transition between bass and treble, revealing greater clarity, openness, and musical engagement.

Cabinet Design and Construction

Our new curved cabinet design is crafted using cold-press construction, ensuring stable panel bonding, improved cabinet damping, and exceptional rigidity for reduced resonance and a cleaner, more natural sound. Cold pressing also protects the beautiful natural walnut veneer, maintaining material integrity and consistent acoustic performance.

Tuned bass-reflex ports can be adjusted with the supplied foam plugs to fine-tune the low-frequency response to suit your room.

The Series 7 Special Edition range represents the most complete expression yet of Richter's philosophy – crafted for the love of music, and built to move you.

Design Team

Concept and Vision – Brian Rodgers

Senior Design Engineering – Dr Martin Gosnell B.E.(Hons.) PhD (Physics)

Industrial Design – Adam Hobbs (Bachelor of Industrial Design)

What's in the box

WIZARD S7SE, DRAGON S7SE or EXCALIBUR S7SE

- 1 x WIZARD S7SE, DRAGON S7SE or EXCALIBUR S7SE Speaker per Carton
- 1 x Magnetic Speaker Grill
- 1 x Foam Bass damping Plug in each WIZARD S7SE
- 2 x Foam Bass damping Plugs in each DRAGON & EXCALIBUR S7SE
- 1 x S7SE Instruction Manual and Warranty Card
- 2 x SPEAKER STABILISER bars
- 4 x Metal Floor Spikes and Floor placement disks
- 4 x Rubber Spikes
- 4 x Floor spike locking nuts
- 6 x M6 ϕ Mounting screws and Spring washers

AURORA S7SE

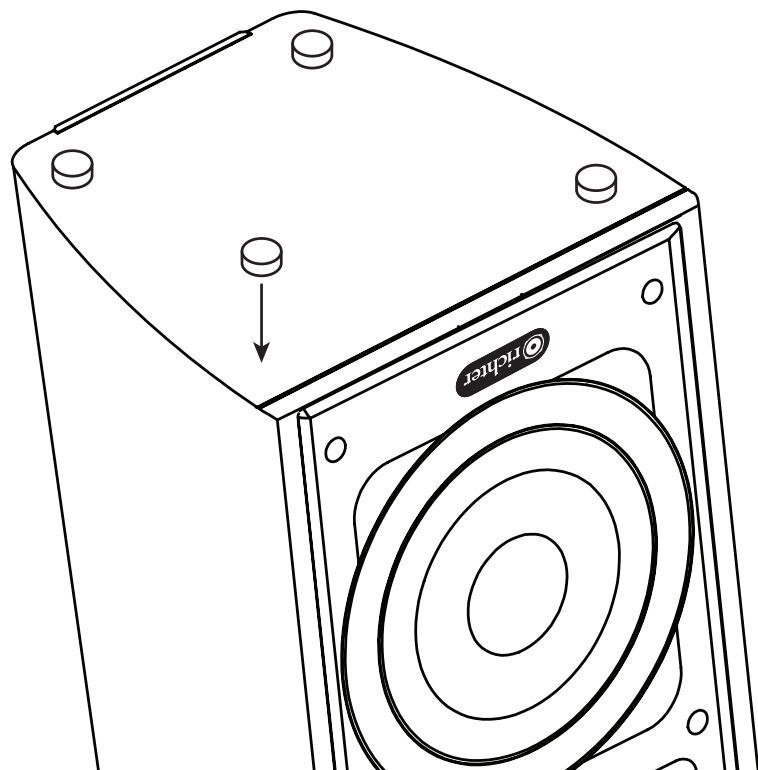
- 2 x AURORA S7SE Speakers per Carton
- 2 x Magnetic Speaker Grills
- 2 x Foam Bass damping Plugs 1 in each Aurora S7SE
- 1 x S7SE Instruction Manual and Warranty Card
- 8 x Adhesive Rubber feet (4 per speaker)

Before you begin

Carefully unbox the speakers on a clean, soft surface being careful not to damage the cabinet finish or drivers, If possible, it's always good to keep the carton box for future repackaging and relocations. If there should be damage on the loudspeaker, please contact your retailer.

Fitting AURORA S7SE Rubber Feet

The AURORA S7SE Speakers are supplied with 4 adhesive rubber feet, using the foam packing lay the speaker on its side or turn it over to position the 4 rubber feet on its base, if the surface is uneven you may use 3 rubber feet, 2 positioned at the front as per the diagram and one in the middle at the rear.



Fitting the Floor Stabilisers

To attach the aluminium stabiliser bars, place the speaker on its back or upside down on a clean soft surface or using the foam packaging from the carton to protect the speaker from any accidental damage.

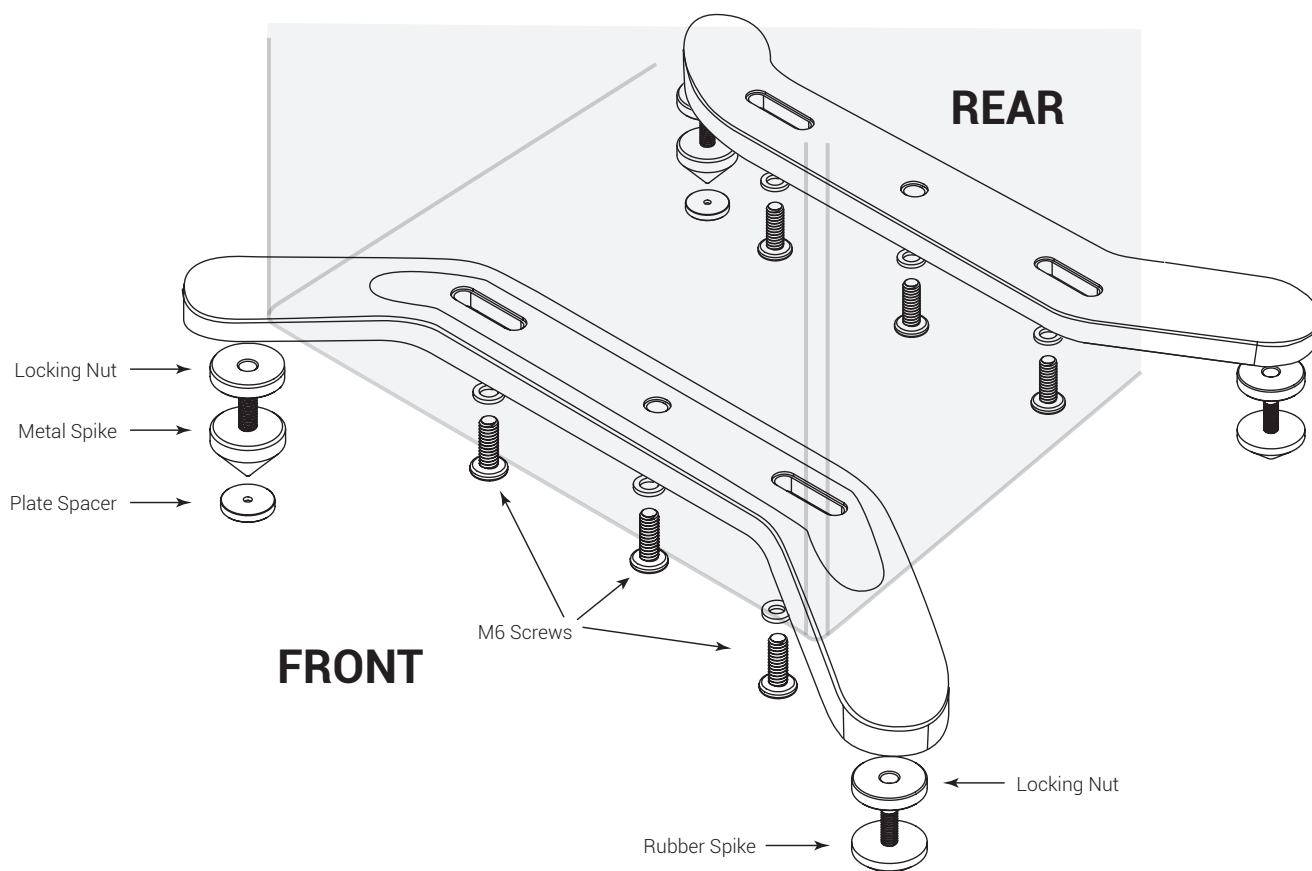
Place the stabiliser bar with the EVA seal side to the base of the speaker.

Align the centre fixing hole first then use the supplied 6 x M6 screws with spring washers to secure the Stabiliser bar in all 3 fixing points to the base of the speaker. (Do not over tighten).

There are both metal spikes with floor positioning discs and rubber spikes for you to select from depending on your floor surface type. These options are provided to cater for the many floor surfaces and to avoid any damage to hard floor surfaces.

Screw the locking nut all the way onto each spike and Screw each spike all the way into the stabiliser bars.

Turn the speaker onto its feet and place it in final listening position. If the speaker wobbles then adjust the needed spike little by little until the speaker becomes stable and use the locking nut to secure the position.



IMPORTANT: The **WIZARD S7SE**, **DRAGON S7SE** and **EXCALIBUR S7SE** have been designed and are intended to be used with the supplied S7 Speaker Stabilisers. We strongly recommend fitting the supplied Floor Stabilisers which are required to improve the stability and safety of the speaker in the Home as well as the acoustic performance.

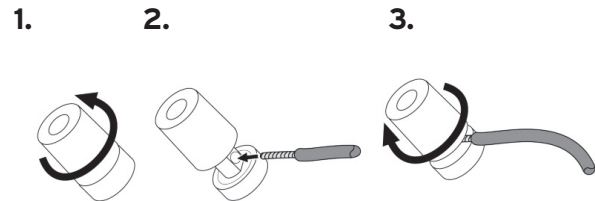
Installation

CAUTION: Make sure that all of the system's electrical components are turned OFF (and preferably unplugged from their AC outlets) before making any connections.

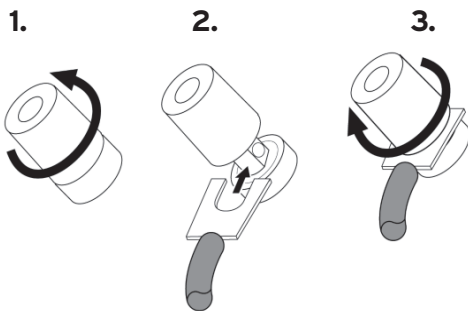
SPEAKER CONNECTION OPTIONS

Speakers and amplifiers have corresponding positive and negative (“+” and “-”) connectors. All Richter S7SE speakers have binding posts that are marked + and - on the terminal plate, additionally the + binding post has a red marking while the negative binding post has a black marking.

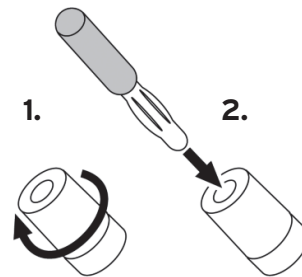
Bare wire or pin connectors



Spade connectors



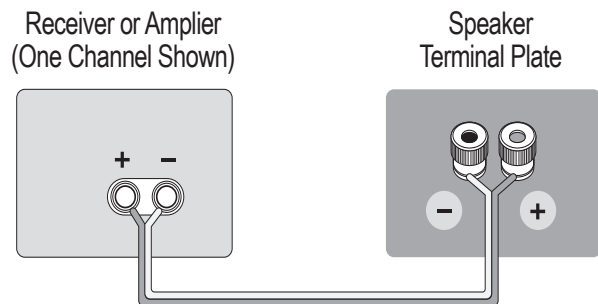
Banana plugs



AMPLIFIER CONNECTION

To ensure correct polarity, connect each “+” (red) connector on the back of the amplifier or receiver to the respective “+” (red) connector on each speaker.

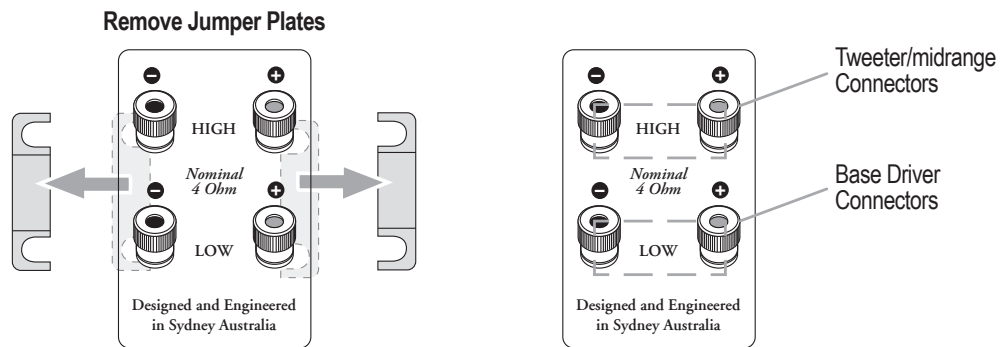
Connect the “-” (black) connectors in a similar way. Do not reverse polarities (i.e., “+” to “-” or “-” to “+”) when making connections. Doing so will cause poor stereo imaging and diminished bass performance.



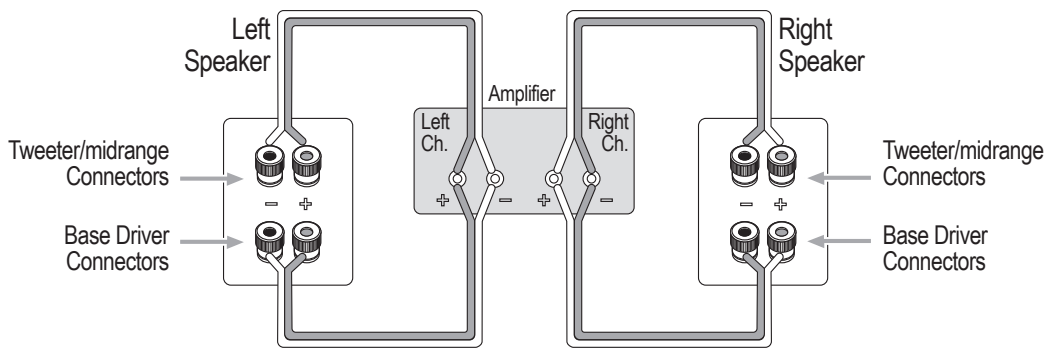
IMPORTANT: Make sure the + and - wires or connectors do not touch each other or the other binding post, Touching wires can cause a short circuit that could damage your amplifier. Richter S7SE speakers use Nickel plated binding posts which can accept a variety of connector types: bare wire, pin connectors, spade connectors and banana plugs.

Bi-Wire Connection

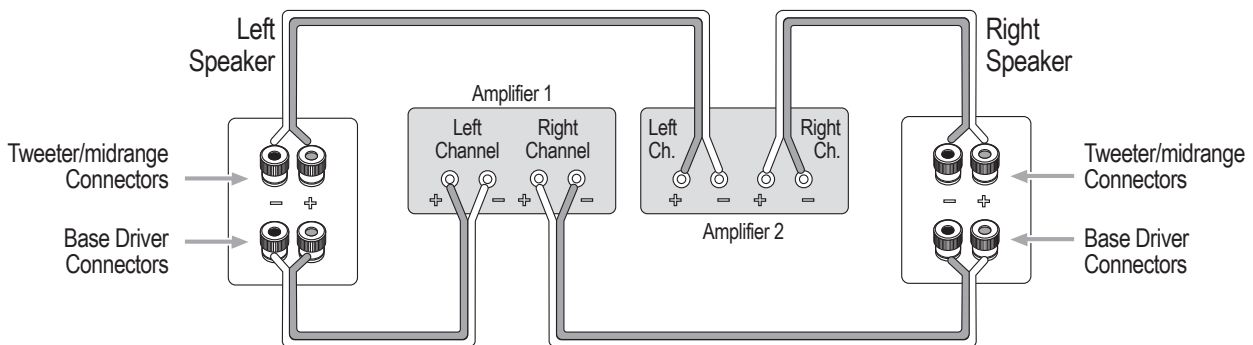
Our Floor Standing Special Edition Loudspeakers are Bi-wire ready with the High and Low Frequency Speaker connectors joined by metal jumper plates. The upper set of connectors is for the tweeter and midrange drivers, and the lower set of connectors is for the Bass drivers. This allows you to bi-wire the speakers using a single stereo amplifier or using two stereo amplifiers. Bi-wiring can offer performance advantages and more flexibility in power-amplifier selection over a conventional single-wire connection.



SINGLE AMPLIFIER BI-WIRING



SINGLE AMPLIFIER BI-WIRING



For more information about Bi-wiring and speaker connection options, contact your Richter dealer.

Placement

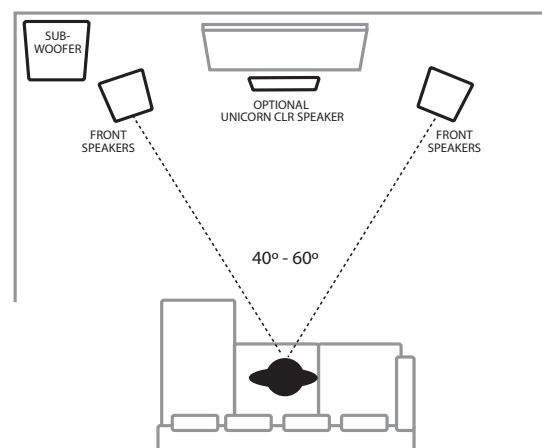
SPEAKER PLACEMENT 2.1 STEREO

For best results, place your speakers 6-10 feet (1.8m-3m) apart. Angling the speakers toward the listening position can improve the stereo imaging. The speakers will produce the most accurate stereo soundstage when the angle between the listener and the speakers is between 40 and 60 degrees. Richter's wide dispersion tweeters maximise flexibility in speaker placement. (Tweeters are generally the most directional driver type.)

Generally, bass output will increase as the speaker is moved closer to a wall or corner but it may become 'boomy' if placed too close. (Refer following page for Room Tuning)

For best performance, place your speakers at least 51cm (20 inches) away from walls - but each room is different so try different positions and listen for yourself.

NB. For specific subwoofer placement options, see subwoofer User Manual.



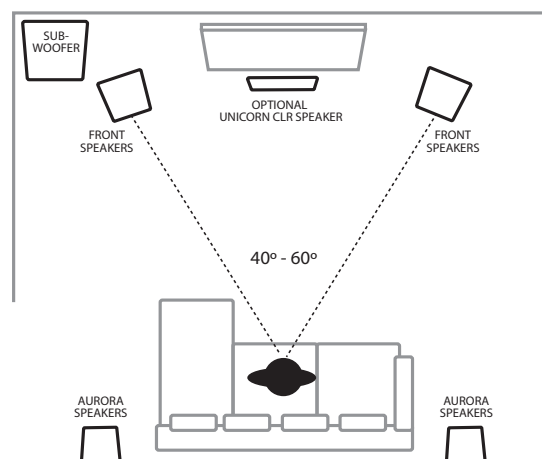
SPEAKER PLACEMENT 5.1 HOME THEATRE

When you use rear speakers in a surround system, place them slightly behind your listening position, facing each other. Ideally, they should be 90cm-120cm (3-4 feet) above the floor. (Place them on a raised platform or use speaker stands).

An alternate location is on a wall behind the listening position, facing forward using optional wall brackets. (Consult your dealer for suitable wall brackets.)

The surround speakers should not call attention to themselves while they're playing. Experiment with their placement until you hear a diffuse, ambient sound accompanying the sounds that you hear from the front and centre speakers.

NB. For specific subwoofer placement options, see subwoofer User Manual.



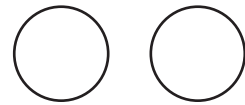
Room Tuning

MECHANICAL ADJUSTMENT OF THE BOUNDARY FREQUENCY

By using the supplied foam bass damping plugs in the bass reflex ports, you can alter the in room frequency response of your speakers, particularly allowing you to tune the speakers performance in small rooms or near walls and corners.

This gives you the flexibility to alter the sonic signature of your speakers and make them work best within a variety of environments.

- **PLUGS REMOVED** Removing the reflex port plugs will increase the efficiency of the speakers so that they produce higher sound pressure levels, than with both ports plugged. This is great if you have a larger listening room or a layout that just seems to soak up the bass. With correct placement and no plugs in the ports, the speakers will provide a “faster”, “rich” and “punchy” bass character.



- **PLUGS INSERTED** With both ports plugged, the air flow through the vents is resisted thus changing the dynamics of the speakers operation. It will tend to reduce the level of bass but can restore the response to one having an ideal transient character or speed. This is particularly relevant if placement is in a small room or against a wall (or near a corner) as these conditions can tend to artificially boost the response (boomy) and deteriorate the transient details or speed.
If one Speaker is placed near a room corner and creating a boomy response. Inserting a port plug into one speaker only, may restore the desired bass character.



Care of your speaker

Your new speakers do not require any regular maintenance or calibration. Normal dusting or cleaning of the surface for appearance purposes is all that is required.

CABINET AND BAFFLE - Avoid using harsh detergents or chemicals when cleaning the cabinet. Abrasives, detergents, or cleaning solutions may damage the finish on the cabinet. For care of your Natural Walnut cabinet finish refer to page 3 for the Natural Walnut Veneer care guide.

GRILL - The cloth grill may be carefully cleaned using a vacuum. Animal hair can be removed using masking tape or similar. Avoid using brushes with stiff bristles that may damage the grill cloth.

TWEETERS & WOOFERS - DO NOT use liquids, brushes or a vacuum to clean the drive units, if any cleaning of the drivers or surrounds is required Only use a damp cloth very gently.

Troubleshooting

If you should experience a problem with the operation of your speakers, please check all of the following before seeking service. Following is a simple troubleshooting guide to assist you.

1. Is the Amplifier volume control properly set and the correct source signal selected?
2. Are the speakers correctly connected to the amplifier by one of the means described on page 7.
3. If the speakers exhibit a drastic change in sound, after you check the items above you may wish to perform the additional steps below to assist in troubleshooting by verifying the proper operation of both amplifier and speakers.
 - Turn on your audio equipment,
 - Prepare to play a 20Hz to 20KHz frequency sweep (test tone) from a CD/DVD test disc, Youtube, smart phone, computer, or other signal source
 - Adjust the volume of your equipment to a medium volume level and start playing the test signal
 - Prepare to carefully listen to the Speakers frequency output (make sure the room is quiet)
 - Turn down the volume or stop the test signal after a few seconds.
 - The above process helps determine if the speakers drivers are functional.
 - If there is no change and you are still unable to hear output from the speakers or a driver then inspection by an authorised retailer or qualified technician may be required.

The following conditions require service by an authorised Retailer:

- The unit has been exposed to liquid.
- The unit does not appear to operate normally or exhibits a marked change in performance.
- Part of the cabinet or drivers have been physically damaged.

Service

WHERE TO SEND THE PRODUCT FOR A WARRANTY REPAIR

For service contact your retailer first or you can locate your nearest service centre at www.richter.com.au/service-centres/

For questions regarding service, contact us at customer support from our website: www.richter.com.au

Before transporting your product ALWAYS pack the product / part very carefully. Unfortunately damages during transportation can be common. If the package is weak, the transporting company does not compensate damages. Remember to always enclose a copy of your receipt and a description of the defect.

MODEL	AURORA S7SE
Type:	3 Way Floor Standing
Enclosure:	Vented Bass Reflex Design
Tweeter:	25mm soft dome neo
Mid range:	70mm Mid Dome
Mid Bass:	1 x 165mm (6 1/2") High Excursion Driver, Composite Paper cone
Response:	(-6dB) XXHz-30KHz
Sensitivity:	XX dB (2.83Vrms, 1m on Axis)
Nominal Impedance:	6 Ohms (minimum XX Ohms)
Rec Amplifier Power:	100-150 Wrms
Dimensions includes Grill	H 385 x W 221 x D 320
Net Weight:	XX.X Kg Per Speaker

MODEL	WIZARD S7SE
Type:	3.5 Way Floor Standing
Enclosure:	Vented Bass Reflex Design
Tweeter:	25mm soft dome neo
Mid range:	70mm Mid Dome
Mid Bass:	1 x 165mm (6 1/2") Composite Paper cone
Bass:	1 x 165mm (6 1/2") High Excursion Driver, Composite Paper cone
Response:	(-6dB) 26Hz-30KHz
Sensitivity:	89 dB (2.83Vrms, 1m on Axis)
Nominal Impedance:	6 Ohms (minimum 4.5 Ohms)
Rec Amplifier Power:	100-200 Wrms
Dimensions includes Grill & Speaker Stabilisers:	H1006 x W 285 x D 392
Net Weight:	20.7 Kg Per Speaker

Specifications subject to change without notice.

MODEL	DRAGON S7SE
Type:	4 Way Floor Standing
Enclosure:	Dual Chamber Vented Bass Reflex design
Tweeter:	25mm soft dome neo
Mid range:	70mm Mid Dome
Mid Bass:	2 x 165mm (6 1/2") Composite Paper cone
Bass:	1 x 165mm (6 1/2") High Excursion Driver, Composite Paper cone
Response:	(-6dB) 25Hz-30KHz
Sensitivity:	90dB (2.83Vrms, 1m on Axis)
Nominal Impedance:	4 Ohms (minimum 3.5 Ohms)
Rec Amplifier Power:	100-300 Wrms
Dimensions includes Grill & Speaker Stabilisers:	H 1091 x W 285 x D 419
Net Weight:	29.1 Kg Per Speaker

MODEL	EXCALIBUR S7SE
Type:	4.5 Way Floor Standing
Enclosure:	Dual Chamber Vented Bass Reflex Design
Tweeter:	25mm soft dome neo
Mid range:	70mm Mid Dome
Mid Bass:	2 x 165mm (6 1/2") Composite Paper cone
Bass:	2 x 165mm (6 1/2") High Excursion Driver, Composite Paper cone
Response:	(-6dB) 24Hz-30KHz
Sensitivity:	91 dB (2.83Vrms, 1m on Axis)
Nominal Impedance:	4 Ohms (minimum 2.5 Ohms)
Rec Amplifier Power:	100-300 Wrms
Dimensions includes Grill & Speaker Stabilisers:	H 1191 x W 285 x D 445
Net Weight:	36.2 Kg Per Speaker

Specifications subject to change without notice.

Your Warranty

THE ENCLOSED TERMS AND CONDITIONS RELATE TO THE WARRANTY PROVIDED BY RICHTER AUDIO PTY LTD ("Richter Audio")(ABN 22 613 067 815) products purchased within Australia.

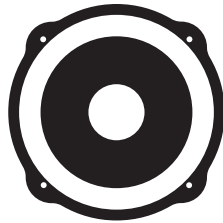
The warranty period is 5 years for Passive Loudspeakers and 2 Years for Active Speakers and Subwoofers, commencing from the date of purchase ("Warranty Period").

GENERAL TERMS AND CONDITIONS OF STANDARD WARRANTY

- 1 Our goods come with guarantees that cannot be excluded under the Australian Consumer Law. You are entitled to a replacement or refund for a major failure and compensation for any other reasonably foreseeable loss or damage. You are also entitled to have the goods repaired or replaced if the goods fail to be of acceptable quality and the failure does not amount to a major failure.
- 2 The benefits to the consumer given by this Warranty are in addition to other rights and remedies of the consumer under a law in relation to goods or services to which the warranty relates, being the Australian Consumer Law.
- 3 Subject to Clause 1 above and the terms below, as your Standard Warranty, Richter Audio agrees to repair or replace at cost the Richter product, and any accessory supplied with the product, purchased by you in Australia when the product does not perform in accordance with the manufacturer's specifications during the Warranty period.
- 4 To make a claim under the Standard Warranty you will need to:
 - (a) Contact Richter Audio through our website www.richter.com.au for customer support.
 - (b) Refund or replacement via your Richter Audio's Authorised Retailer is available for a period of 14 days after purchase for goods that have been inspected and determined to have a major failure. Refund and exchange is not applicable if you change your mind after purchase.
 - (c) Note that you will need to submit proof of purchase (e.g. delivery invoice or purchase receipt) with your claim.
- 5 Products presented for repair may be replaced by refurbished products of the same type rather than being repaired. Refurbished parts may be used to repair the products. Replacement of the product or a part does not extend or restart the Warranty Period.
- 6 If the product presented for repair is capable of retaining user-generated data, you are advised that repair of the product may result in loss of the data. Richter Audio shall not be held responsible for any loss of such data as a consequence of fault-find or repair process.
- 7 The product will be at the owner's risk whilst in transit to and from the Richter Audio Service Centre, unless transported by Richter Audio or 3rd party transport booked by Richter Audio.
- 8 Richter Audio will bear the expense of transport where transported by Richter Audio. Any other expense of claiming the warranty will be covered by the owner of the goods.
- 9 Richter Audio may seek reimbursement of any costs incurred by them when the product is found to be in good working order. The owner of the goods will cover any return transport cost.
- 10 Products returned to Richter Audio by a courier and are damaged in transit by insufficient packing will be quoted and the cost of the repair will be covered by the owner of the goods.

EXCLUSIONS AND LIMITATIONS

- 11 Subject always to Clause 1 the Standard Warranty will not apply:
 - (a) if the product has not been installed, operated, maintained or used in accordance with the manufacturer's instructions or specifications provided with the product.
 - (b) to damage, malfunction or failure resulting from alterations, accident, misuse, abuse, fire, liquid spillage, mis-adjustment of customer controls, use on an incorrect voltage, power surges and dips, thunderstorm activity, acts of God, voltage supply problems, tampering or unauthorised repairs by any persons, use of defective or incompatible accessories, the operation of a computer virus of any kind, exposure to abnormally corrosive conditions or entry by any insect, vermin or foreign object in the product.
 - (c) to damage arising during transportation, installation or while moving the product, or to any transportation costs of the product or any parts thereof to and from the owner, unless otherwise specified in this Warranty.
 - (d) to any third-party software or hardware not contained in the product as originally configured by the manufacturer.
 - (e) to any failure, to the extent that the failure is not a failure of the product to perform in accordance with its specifications.



richter

For support and warranty registration visit
www.richter.com.au

Our goods come with guarantees that cannot be excluded under the Australian Consumer Law. You are entitled to a replacement or refund for a major failure and for compensation for any other reasonably foreseeable loss or damage. You are also entitled to have the goods repaired or replaced if the goods fail to be of acceptable quality and the failure does not amount to a major failure.

S7SE | 10-OCT-25